

Course Fees

INCLUDED IN THE FEES

- Oxford Practice Online E-Learning
- Orientation Meeting
- Welcome Party
- Free activity
- Placement Test
- One course book & course material
- Course Certificate
- Free WIFI
- Welcome Pack
- Student Map
- Student Card
- SIM card for mobile phone
- Weekly tutorials (8 weeks +)
- Academic Counselling
- Student Library
- Internet Café
- Use of Outdoor Pool, Fitness Centre (restricted hours), Student Lounge

NOTES

- Courses start every Monday.
- Each lesson consists of 45 minutes.
- An intermediate level of English or higher is required to join the Professional English courses. Students wishing to join an Exam Preparation course must have an appropriate level of English relevant to the exam they wish to take.
- All fees are in €.

| COURSE TYPE | STUDENTS PER CLASS | LESSONS PER WEEK | 1 - 7 WEEKS PRICE € | 8 - 23 WEEKS PRICE € | 24+ WEEKS PRICE € |
|-------------------------------------|--------------------|------------------|---------------------|----------------------|-------------------|
| General English – Standard | 12 | 20 | 180 | 140 | 120 |
| General English – Intensive | 12 | 30 | 240 | 200 | 180 |
| General English – Super Intensive | 12 | 40 | 300 | 260 | 240 |
| Professional English – Standard | 8 | 20 | 260 | 220 | 200 |
| Professional English – Intensive | 8 | 30 | 320 | 280 | 260 |
| Professional English – Combination | 8 / 1 | 30 | 510 | 470 | 450 |
| Individual English – 10* | 1 | 10 | 250 | 250 | 250 |
| Individual English – 20 | 1 | 20 | 500 | 500 | 500 |
| Semi-Individual English – 10* | 2 | 10 | 150 | 150 | 150 |
| Semi-Individual English – 20 | 2 | 20 | 300 | 300 | 300 |
| Exam Preparation – IELTS Classic | 12 | 30 | 240 | 200 | 180 |
| Exam Preparation – IELTS Fluency | 12 | 30 | 335 | 335 | 335 |
| Exam Preparation – IELTS 30 plus | 12 | 30 | 500 | 500 | 500 |
| Exam Preparation – FCE, CAE and CPE | 12 | 30 | 330 | 290 | 270 |
| High Season supplement | | | 60 | n/a | n/a |

*To be booked with another course

LOW SEASON

01.01.2020 - 20.06.2020
24.08.2020 - 31.12.2020

HIGH SEASON

21.06.2020 - 23.08.2020

**COURSE HIGH SEASON
SUPPLEMENT
€60 PER WEEK**

**NO HIGH SEASON SUPPLEMENT
ON COURSE FEES FOR STAYS
OF 8 WEEKS AND OVER**

OTHER FEES / INFORMATION

Course Resource Fee (Compulsory & non-refundable)

1-7 weeks €40
8-23 weeks €70
24 weeks + €100

Airport Transfers €25 per way
Pocket Money Fee €10

Courier Fee for Original Documents
Europe €40
Asia incl. CIS €50
South America €60

Specific Lessons time supplement €40 per week

Rates and supplements are in € per person per week and for participants aged 16 years and over.

Course Resource Fee

Includes welcome pack, orientation meeting, placement test, one course book, course material, course certificate and e-Learning.

- Rates do not include exam fees, leisure or cultural activities; these can be booked and paid for at Clubclass.
- Rates do not include insurance.
- Prices may change if there are revisions in governmental policy, fuel or tax increases, or other unforeseen events beyond the School's control. All fees are correct at the time of going to print. Clubclass retains the right to amend the fees as necessary.
- Bookings which extend over more than one season will be charged the respective weekly supplement for the season concerned unless otherwise stated.

ACADEMIC AND INTENSIVE COURSES

CORE MODULES CAN BE COMBINED TO CREATE THE FOLLOWING SAMPLE COURSES. THE BELOW ARE THE MOST POPULAR COMBINATIONS; OTHER OPTIONS COMBINING TWO OR MORE OF THE CORE MODULES ARE ALSO POSSIBLE.

Exam Preparation

NUMBER OF LESSONS PER WEEK

| | | |
|--------------------------|--|----|
| IELTS Classic | IELTS 10 plus General English - Standard | 30 |
| IELTS Fluency | IELTS 20 plus General English - Fluency | 30 |
| IELTS 30 plus | IELTS 20 plus IELTS 10 | 30 |
| Cambridge FCE, CAE & CPE | Cambridge 10 plus General English - Standard | 30 |

Combination Course

NUMBER OF LESSONS PER WEEK

| | | |
|-----------|---|----|
| Standard | General English - Standard plus Individual English 10 | 30 |
| Intensive | Individual English 20 plus General English - Fluency | 30 |

Business / Professional English

NUMBER OF LESSONS PER WEEK

| | | |
|-------------|--|----|
| Intensive | Professional English - Mini Group plus General English - Fluency | 30 |
| Combination | Professional English - Mini Group plus Individual English 10 | 30 |



INTERNSHIP PLACEMENT FEE €350

FEE INCLUDES:

Interview with Internship Coordinator, Review of Curriculum Vitae, Internship Offers matching expectations and skills, Consultation prior to interview with prospective companies, Internship Agreement, Intern Manual, Continued Support prior, during and after Internship Experience.

FIELDS AVAILABLE:

Catering, Hospitality, Administrative, Accounting, Event Management, Sales & Marketing, Customer Care, Retail, Manufacturing and many more!

Accommodation Fees

| ACCOMMODATION TYPE | 1 - 7 WEEKS PRICE € | 8 - 23 WEEKS PRICE € | 24+ WEEKS PRICE € |
|---|------------------------|-------------------------|----------------------|
| SHARING (three or four persons in a bedroom) | | | |
| Student House (SC) | 125 | 120 | 115 |
| Dusk Court (SC) | 130 | 125 | 120 |
| Hostel (SC) | 135 | 130 | 125 |
| Residence Apartment (SC) | 140 | 135 | 130 |
| Garden View - Two Bedroom Apartment (SC) | 145 | 140 | 135 |
| St. Andrew's Suites - Two Bedroom Suite (SC) | n/a | n/a | n/a |
| Garden View - One Bedroom Apartment (SC) | 155 | 150 | 145 |
| St. Andrew's Suites - One Bedroom Suite (SC) | n/a | n/a | n/a |
| Host Family (HB) | 180 | 170 | 160 |
| High Season supplement | 60 | 60 | - |

TWIN (two persons in a bedroom)

| | | | |
|--|-----------|-----------|----------|
| Student House (SC) | 150 | 130 | 120 |
| Dusk Court (SC) | 160 | 140 | 125 |
| Hostel (SC) | 170 | 150 | 130 |
| Residence Apartment (SC) | 180 | 160 | 140 |
| Garden View - Two Bedroom Apartment (SC) | 190 | 170 | 150 |
| St. Andrew's Suites - Two Bedroom Suite (SC) | 200 | 180 | 160 |
| Garden View - One Bedroom Apartment (SC) | 210 | 190 | 170 |
| St. Andrew's Suites - One Bedroom Suite (SC) | 220 | 200 | 180 |
| Host Family (HB) | 190 | 180 | 170 |
| High Season supplement | 60 | 60 | - |

SINGLE (one person in a bedroom)

| | | | |
|--|-----------|-----------|----------|
| Student House (SC) | n/a | n/a | n/a |
| Dusk Court (SC) | 200 | 180 | 160 |
| Hostel (SC) | n/a | n/a | n/a |
| Residence Apartment (SC) | 240 | 220 | 200 |
| Garden View - Two Bedroom Apartment (SC) | 260 | 240 | 220 |
| St. Andrew's Suites - Two Bedroom Suite (SC) | 280 | 260 | 240 |
| Garden View - One Bedroom Apartment (SC) | 300 | 280 | 260 |
| St. Andrew's Suites - One Bedroom Suite (SC) | 320 | 300 | 280 |
| Host Family (HB) | 250 | 240 | 230 |
| High Season supplement | 60 | 60 | - |

LOW SEASON

01.01.2020 - 20.06.2020
22.08.2020 - 31.12.2020

HIGH SEASON

21.06.2020 - 23.08.2020

**ACCOMMODATION
HIGH SEASON
SUPPLEMENT
€60 PER WEEK**

**NO HIGH SEASON SUPPLEMENT
ON ACCOMMODATION FEES FOR
STAYS OF 24 WEEKS AND OVER**

CATERING OPTIONS

Continental Breakfast

€46.50 per week
(for 7 breakfasts)

Packed Lunch

€38 per week
(for 7 lunches)

Dinner Three Course

€105 per week
(for 7 dinners – meal
includes beverage)

Special Diet Supplement

€14 Breakfast
€7 Packed Lunch
€14 Dinner

SC Self Catering HB Half Board

ACCOMMODATION INFORMATION

- Accommodation Only supplement €100 per week
- Only nationality in the room (subject to availability) €50
- Early Check-in Fee. Check-in on the day of arrival is at 14:00. An earlier check-in at an additional fee is possible, subject to availability.

- Late Check-out Fee. Check-out on the day of departure is at 10:00. A later check-out at an additional fee is possible, subject to availability.
- Private Bathroom supplement in a host family €50 per week
- Travel Insurance €12.50 per week (minimum two weeks)

ECO TAX applicable to all students aged 18 and over. €0.50 per night, capped at a maximum of €5 per visit. To be paid locally.



DUSK COURT

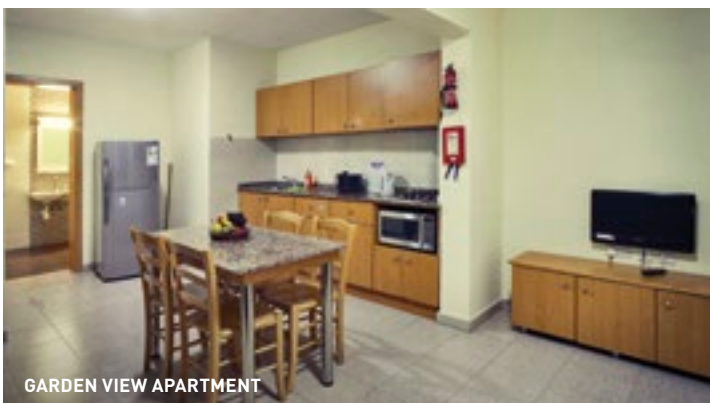
NOTES

- A refundable damage deposit of €100 will be collected from each student on arrival – this does not apply to students staying with host families.
- Students travelling alone can book twin/triple accommodation. Students, who would like to share the same bedroom, are to send their reservations together. Whilst the school will do its utmost to accommodate such requests, these cannot be guaranteed.
- The School reserves the right to allocate students in alternative accommodation of a similar or better standard (based on the value) without prior notification where circumstances beyond the school's control necessitate such changes.
- Extra nights are charged on a pro-rata basis (based on the charge for one week of accommodation); however the charge for a whole week will apply for 5 or 6 extra nights.

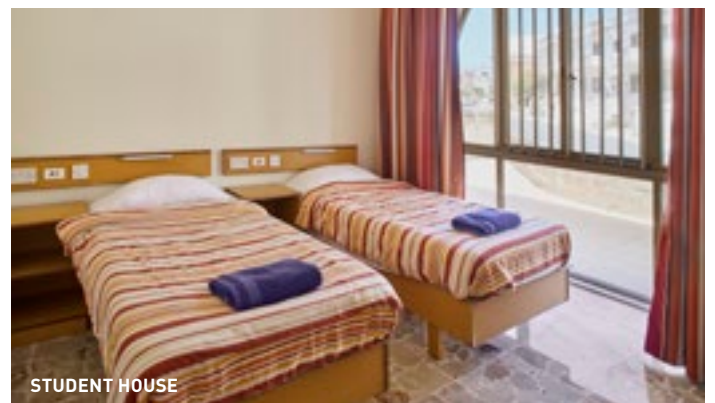
ACCOMMODATION

- ✓ AVAILABLE
 A ACROSS THE ROAD FROM THE SCHOOL
 I IN THE SAME BUILDING AS THE SCHOOL
 W WITHIN WALKING DISTANCE OF THE SCHOOL
 € AT A CHARGE (PAID LOCALLY)
 P PRIVATE
 S SHARED (IN THE ACCOMMODATION)
 ⌚ AT PRESET TIMES

| | SHARED | TRIPLE | TWIN | SINGLE | NO. OF BEDROOMS | WI-FI | TV | KITCHEN | BATHROOM | AIR-CONDITIONING | FAN | LOCATION |
|--|--------|--------|------|--------|-----------------|-------|----|---------|----------|------------------|-----|----------|
| St. Andrews Suites - One Bedroom | | | ✓ | ✓ | 1 | ✓ | P | P | P | ⊗ | | A |
| Garden View - One Bedroom Apartment | | ✓ | ✓ | ✓ | 1 | ✓ | P | P | P | ⊗ | | I |
| St. Andrews Suites - Two Bedroom Apartment | | | ✓ | ✓ | 2 | ✓ | S | S | 1 | ⊗ | | A |
| Garden View - Two Bedroom Apartment | | ✓ | ✓ | ✓ | 2 | ✓ | S | S | 1/2 | ⊗ | | I |
| Residence Apartment | | ✓ | ✓ | ✓ | 3/4 | | S | S | 2/3 | € | ✓ | A |
| Hostel | | ✓ | ✓ | | 15 | ✓ | P | S | P | € | ✓ | A |
| Dusk Court | ✓ | ✓ | ✓ | ✓ | 4 | ✓ | S | S | S | € | | A |
| Student House | | ✓ | ✓ | | 10 | ✓ | S | S | S | | ✓ | A |
| Host Family | | ✓ | ✓ | ✓ | | ✓ | S | | S | | ✓ | W |



GARDEN VIEW APARTMENT



STUDENT HOUSE